

Attachment G2

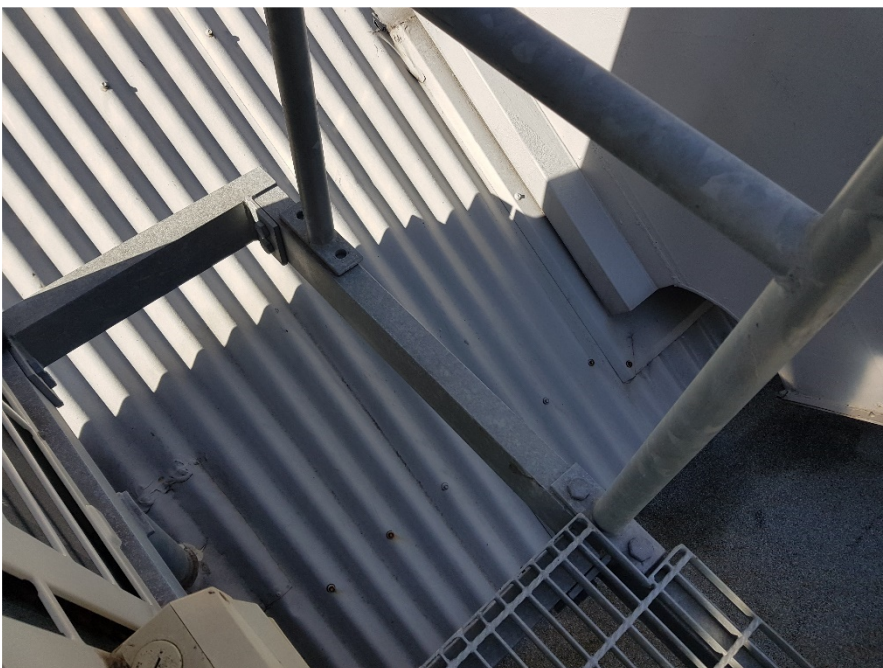
**Condition Assessment
Queen Victoria Building**

Figure 11: Typical New Access Walkways



Source: Mott MacDonald 2018

Figure 12: Missing Bolts on Balustrade South End



Source: Mott MacDonald 2018

Figure 13: Diagonal Cracking Through Bed Joints Above Windows



Source: Mott MacDonald 2018

Figure 14: Diagonal Cracking Through Bed Joints Above Windows



Source: Mott MacDonald 2018

Figure 15: Diagonal Cracking Through Bed Joints Above Windows



Source: Mott MacDonald 2018

Figure 16: Diagonal Cracking Through Bed Joints Above Windows



Source: Mott MacDonald 2018

Figure 17: Cracking Around Old Embedded Fixings



Source: Mott MacDonald 2018

Figure 18: Vertical Cracking at Sandstone Brick Interface



Source: Mott MacDonald 2018

Figure 19: Cracking in Northern Fire Escape Walls



Source: Mott MacDonald 2018

Figure 20: Cracking Around Railing Fixings



Source: Mott MacDonald 2018

Figure 21: Vertical Cracking in Masonry



Source: Mott MacDonald 2018

Figure 22: Vertical Cracking in Masonry



Source: Mott MacDonald 2018

Figure 23: Vertical Cracking in Dome Masonry



Source: Mott MacDonald 2018

Figure 24: Horizontal Crack in Column



Source: Mott MacDonald 2018

Figure 25: Cracking in Lintel



Source: Mott MacDonald 2018

Figure 26: Diagonal Cracking in Tea Room Lintel



Source: Mott MacDonald 2018

Figure 27: Fire Escape Cracking



Source: Mott MacDonald 2018

Figure 28: Diagonal Cracking Above Fire Escape Door Opening



Source: Mott MacDonald 2018

Figure 29: Spalling Concrete



Source: Mott MacDonald 2018

Figure 30: Signs of Water Ingress On Tea Room Entrance Roof



Source: Mott MacDonald 2018

Figure 31: Damp Walls in Fire Escape



Source: Mott MacDonald 2018

Figure 32: Damp Fire Escape Walls Under North West Flat Roof



Source: Mott MacDonald 2018